

VOERE

LBW 20-03

Standard / Luxus / De Lux

User Manual

Caution:

Read the complete user manual before using the rifle. Your dealer will be happy to answer any questions you may have. Ensure you are completely familiar with its operation before putting it into service.

List of Contents

1. General Safety Rules	4	3. Care and Maintenance	16
1.1.1 General Safety Rules in the Handling of Guns	4	3.1 Care	16
1.1.2 Unload your gun	5	3.1.1 Barrel	16
2. User Manual	6	3.1.2 Metal Parts	16
2.1 Disassembly of the gun	7	3.1.3 Stock	16
2.1.1 Remove bolt assembly from the rifle (S,L,D)	7	3.1.4 Optics	16
2.1.2 Changing the Bolt Head (S,L,D)	7	3.2 Maintenance	16
2.1.3 Remove the Magazine	8	4. Technical Information	17
2.1.4 Removal of the stock	8	4.1.1 Length	17
2.1.5 Removal of the barrel (S,L,D)	8	4.1.2 Weight	17
2.2 Assembly of the gun	9	4.1.3 Magazine Capacity	17
2.2.1 Demounting and reassembling of bolt assembly (S,L,D)	9	4.1.4 Chamber Lock	17
2.2.2 Assemble Action with Barrel (S,L,D)	9	4.2 Exploded View	18
2.2.3 Recognition of correct calibre (S,L,D)	10	4.3 Caliber Table	19
2.2.4 Assemble Action with Barrel and Stock (S,L)	10	5. Options	20
2.2.5 Assemble Action with Barrel and Stock (D)	10	5.1.1 Case	20
2.2.6 Assemble bolt in chamber (S,L,D)	11	5.1.2 Combination Trigger	20
2.2.7 Mounting telescopic sight	11	5.1.3 Spare Magazine	20
2.2.8 Loading of the Magazine (S,L,D)	11	5.1.4 Stock	20
2.3 Function of the Gun	12	5.1.5 Barrel	20
2.3.1 Side Safety Catch and Chamber Lock (S)	12	5.1.6 Scope Mount for LBW	20
2.3.2 Safety and Chamber Lock Cocking Piece (L,D)	12	5.1.7 Carbon Version	21
2.3.3 Loading and Shooting	13	5.1.8 Muzzle Break	21
2.3.4 Unloading the gun	14	6. Guarantee Conditions	21
2.4 Operation, Adjustments	15	6.1.1 Manufacturer's Guarantee	21
2.4.1 Trigger	15		
2.4.2 Open Sights	15		
2.4.3 Mounting of telescopic sight	15		

S..... Standard LBW (Side Safety Catch, Stock Standard) • L..... Luxury LBW (Safety Bolt Lock, Stock Luxury) • D..... Take Down LBW (Safety Bolt Lock, Take Down)

1. General Safety Rules

Your new VOERE hunting rifle Model LBW differs from other bolt-action rifles in the special features of its construction. Always bear in mind the need for care in handling weapons as well as the legal requirements. First check that you have the right User Manual: the model number and the calibre are marked on the barrel.

1.1.1 General Safety Rules in the Handling of Guns

- Ensure that the gun and ammunition never fall into unauthorized hands.
- Always store the gun and ammunition separately, under lock and key, away from unauthorized access.
- Observe the applicable legal regulations for the storage and use of guns and ammunition.
- Familiarise yourself thoroughly with the operation of your gun and practice all adjustments and functions with an unloaded gun before using it.
- Regard every rifle as loaded and cocked, unless you have established the contrary by opening the breechblock and examining the magazine, chamber and barrel. An unloaded gun should be handled like a loaded gun.
- Always ensure that the muzzle is pointed in a direction where there is no danger to people or property.
- Before loading ensure that the barrel is free, and thereafter make certain that no foreign bodies (e.g. Water, snow, ice, earth) can get in.
- Only use undamaged CIP certified ammunition, with clearly the right calibre for the rifle. Faultily reloaded ammunition can damage your gun and lead to serious injuries.
- Only load your weapon directly before its use.
- Cock your rifle (release the safety catch) only when you are ready to shoot. When cocking (releasing the safety catch) keep the barrel pointing in a safe direction.
- Before each shot check the area in front of and behind the target.

1. General Safety Rules

- Always ensure that no person is standing beside the ejection port.
- Only point your gun towards a target that you have clearly recognised.
- Put your finger on the trigger only when you intend to shoot.
- If a cartridge does not fire, wait 60 seconds before opening the breech. This is to avoid the danger of a delayed ignition.
- When shooting, you, and people in the area, should wear ear protection (earplugs) and suitable shooting goggles.

1.1.2 Unload your gun

- Before crossing obstacles
- Before climbing up to, or down from a raised hide
- Before entering a building
- Before entering a vehicle
- Before entering an inhabited area
- and also when you temporarily put the gun down or hand it

2. User Manual

PLEASE NOTE:

On assembly, pay special attention that the barrel, breech and magazine correspond with the calibre. In any case, make sure that the gun is unloaded and the magazine removed



Unpacking:

Your rifle and bolt are delivered separately. On assembly of the bolt note that the guidance slot of the bolt sleeve and bolt body line up! (see Pt. 2.2.6) If necessary twist the bolt sleeve accordingly.



2.1 Disassembly of the gun

2.1.1 Remove bolt assembly from the rifle (S,L,D)



Free the bolt by turning the bolt handle through 60°, pull it to the rear while pressing the bolt stop release on the left (in any case, before the bolt is in its rearmost position). The bolt can now be easily removed from the housing. To replace the bolt in the housing, ensure it is centred and introduce it with a slight turn to the right.

Do not use any force!

In case you have chosen the option bolt lock please consider that the bolt lock itself has to be unlocked before opening.

Unlock of bolt lock L,D (Option)

To open the bolt lock in a safe position the cocking knob has to be pressed a few millimetres forwards, the chamber will be opened at the same time. Now it is released and safe.

Please always consider the relevant safety instructions.

In a safe position the bolt assembly can be opened at any time.

2.1.2 Changing the bolt head (S,L,D)

Take the bolt assembly and remove the cross bolt by pressing with your finger nail, a key, a pencil... (1 + 2).



Now the bolt head can be removed forwards without any problems (3). A new bolt head can be put on the same way. Ensure that both flat areas fit together (4). Fix the bolt assembly by inserting the cross bolt.

2.1 Disassembly of the gun

2.1.3 Remove the Magazine (S,L,D)



On pressing the magazine latch from both sides simultaneously the magazine will fall out.

2.1.4 Removal of the stock (S,L,D)



Remove the magazine for safety reasons and ensure that the chamber is clear of ammunition. Remove the bolt.

(S,L) Place the rifle with the magazine opening uppermost. Loosen the front and rear stock screws only until they hang loosely in the magazine baseplate. The system with barrel can then be carefully withdrawn from the stock. The complete magazine box can be pressed out if necessary.

(D) With the De-Lux version (Take Down) the front lever just needs to be opened (make sure the lever is completely opened) and the complete system with barrel can be rotated around the rear pivot point. Then it can be removed effortlessly from the stock.

2.1.5 Removal of the barrel (S,L,D)



the socket-head screws on the side of the housing. When the screws are loose the barrel can be withdrawn from the housing.



2.2 Assembly of the gun

2.2.1 Demounting and reassembling of bolt assembly (S,L,D)

The bolt assembly has been taken out of the system. On the bottom of the bolt you will see 2 marks. In unlocked position the bolt sleeve is in position 2.



Moving the pin on the upper side of the bolt sleeve backwards and turning it clockwise in position 1 at the same time the cocking piece will be opened. Now it can be removed backwards.

Please take care not to turn the bolt sleeve contraclockwise, because then the system will be released and can be turned back into the right position only with a high effort.



Reassembling has to be done in the opposite direction. Introduce the firing pin into the bolt body.

Marking has to be in position 1. Now press the cocking handle (bolt sleeve in version S) heavily until it touches the bolt body and turn the bolt sleeve into position 2 to finish reassembling.

In case bolt sleeve cannot be introduced as far as necessary to touch the bolt body the operation wheel probably has to be moved slightly.

2.2.2 Assemble Action with Barrel (S,L,D)



Push the Barrel (1) from the front into the Action (2). Ensure that the sight or the index groove is uppermost, or the inscription (serial No.) is on the right. The fine tolerances require the barrel to be aligned exactly with the housing. When the barrel is fully inserted, use a 5 mm socket key to tighten the clamp screws (3 and 4) hand tight.

PLEASE NOTE:

Ensure that assembly is performed with the bolt extracted. Ensure that the calibre of bolt, barrel and magazine correspond.

2.2 Assembly of the gun

2.2.3 Recognition of correct calibre (S,L,D)



Make absolutely sure that the calibre of barrel, action and magazine correspond. The calibre of the barrel is marked on its right hand side. The calibre of the magazine is on its side. The type of action is engraved on the breechblock (ST = Standard, MG = Magnum). Use the calibre group table (see Pt. 4.1.3).

Use the components only in a combination where it is absolutely clear that they are compatible.

2.2.4 Assemble Action with Barrel and Stock (S,L)



Put the action with barrel (muzzle forwards) in the stock. First insert the trigger, and tilt the action into the stock. This should require no force. With the action in the stock, hand tighten the action locating screws with a socket key (5 mm). The screws should not project beyond the trigger guard plate.

If the front screw does not sit flush, the seating of the barrel in the action must be checked. The front screw also serves to secure the barrel axially.

2.2.5 Assemble Action with Barrel and Stock (D)



Put the action with barrel (muzzle forwards) in the stock. First insert the trigger, and tilt the action into the stock. This should require no force.

Make sure the lever in the stock is fully opened.

When the action sits in the stock, close the lever.

2.2 Assembly of the gun

2.2.6 Assemble bolt in chamber (S,L,D)



Note that the guidance slot of the bolt sleeve and the bolt body line up.

Hold the bolt with the right hand and press the catch housing on the front edge firmly on the shaft. Push the bolt with the bolt lever into the chamber. The bolt can be pushed until the bolt lever can be turned through 60° downwards. Only when the bolt lever is in the lower position is the gun locked.

If the bolt cannot be fully introduced into the chamber, check whether the bolt is correctly assembled. (the flats on the bolt body and bolt head must be level) Use No Force!

2.2.7 Mounting telescopic sight (only for option precision quick-change mounting)



Place the telescopic sight with upper part initially tilted at 45° on the front end of the mounting plate (see illustration), with the fixing lever open.

Now rotate the tele into the straight position until the index screw contacts the plate. Now close the fixing lever to secure the mounting.

2.2.8 Loading of the Magazine (S,L,D)



Make sure that the magazine corresponds to the calibre chosen.

The calibre is marked on the magazine. The magazine is placed in the magazine slot. Ensure that the magazine latches.

With 9,3 x 62 and .375H&H ammunition it is important that the cartridge rim is pressed into the groove at the rear end of the magazine and so the base of the round abuts the rear of the magazine. If the round is not so located, the gun may well jam. The easiest way is to push the rounds into the magazine from the front. Then press lightly down on the cartridge head, and push it right to the back until the rim can be fed into the groove of the magazine.



2.3 Function of the Gun

2.3.1 Side Safety Catch with Chamber Lock (S)



The standard safety is a trigger safety, which operates on the sear. When the safety catch is in the rear position, the gun is safe and the breech cannot be opened (chamber lock active if this option was chosen at purchase time). When the safety is in the forward position (red spot visible), then the gun is not safe, and the breech can be opened.

PLEASE NOTE:

When operating the safety catch, do not touch the trigger. This could result in the unintentional release of a shot.

2.3.2 Safety and Chamber Lock Cocking Piece (L,D)



The Security System of the VOERE LBW Luxus and De Lux is based on the uncompressed firing spring. The compressor applies compression to the firing spring shortly before the shot; for repeated shots it remains compressed.

With the safety off, the chamber grip is locked against unintended opening of the action while the weapon is carried, if this option was selected at purchase time.

2.3.2.1 Safety off (tensioning) (L,D)



With the thumb in the indentation of the tensioner, press forwards hard until it engages. Releasing the safety exposes a red spot on the housing.

2.3 Function of the Gun

2.3.2.2 Decocking (releasing tension) (L,D)



From the compressed position the rifle can be decocked by pressing and gently releasing the cocking handle.

2.3.2.2 Opening of chamber (option Chamber Lock L, D)

To open the bolt assembly in safe position the cocking knob has to be pressed a few millimetres forwards, the chamber will be opened at the same time. Now it is released and safe.

Please consider the relevant safety instructions. In a released position the bolt assembly can be opened at any time.

2.3.3 Loading and Shooting

2.3.3.1 Standard Model



Introduce the full magazine from below into the gun. Ensure that the magazine catch engages with the magazine.

The bolt of your VOERE-LBW is freed by turning it through 60° with the bolt lever. The bolt should be pulled to its rearmost position and then pushed forwards. The repeater mechanism loads a round from the magazine. Your rifle is now ready to fire.

PLEASE NOTE:

When loading, ensure that the barrel is pointing in a safe direction.

2.3.3.2 Luxus and De Lux

Introduce the full magazine from below into the gun. Ensure that the magazine catch engages with the magazine.

If the gun is equipped with a chamber lock, press the tension knob forwards a few millimeters, so that the chamber can be opened, and a round from the magazine loaded into the breech. The gun is now loaded, but not tensioned and so safe. Tensioning occurs shortly before firing by forward pressure on the tensioning knob.

When the gun is tensioned, repeated fire or unloading is possible at any time.

When filling the magazine care must be taken that 9,3x62 rounds are positioned with their base at the back of the magazine. (see Pt. 2.2.8)

2.3 Function of the Gun

2.3.4 Unloading the gun

2.3.4.1 Standard Model

Pay attention that the gun is fully unloaded after use. Do not just remove the magazine, but operate the action and make a visual check that the breech is empty. If necessary in the dark, check with a finger. In this way accidents can be avoided.

When you are sure that there are no rounds in the gun or magazine, you can decock the gun. To do this, open the bolt and close it with the trigger pressed.

PLEASE NOTE:

Ensure that the barrel is pointing in a safe direction.

2.3.4.2 Luxus and De Lux (without bolt lock)

Pay attention that the gun is fully unloaded after use. Do not just remove the magazine, but operate the action and make a visual check that the breech is empty. If necessary in the dark, check with a finger. In this way accidents can be avoided.

Press the knob with the thumb gently 1-2 mm forwards, while operating the side lever, and then release the knob. This releases the tension and activates the safety.

In compressed position the rifle will be decocked by pressing the cocking knob. In decocked position the cocking handle looks over the action.

2.3.4.3 Unlock of bolt lock L, D (Option)

To open the bolt lock in a safe position the cocking knob has to be pressed a few millimetres forwards, the chamber will be opened at the same time. Now it is released and safe.

Please always consider the relevant safety instructions.

In a safe position the bolt assembly can be opened at any time.

ATTENTION:

As long as the cocking knob is in the forward, unsafe position, the cocking piece of the rifle tensions itself automatically with every repeated shot. When shooting is complete, the cocking handle should be released immediately (safety on)

2.4 Operation, Adjustments

2.4.1 Trigger



The LBW is equipped with a finely adjusted rifle trigger. The trigger pressure is initially set near the lightest possible setting for international safety standards. Any adjustment should only be undertaken by the factory or one of our authorized specialist dealers, to avoid accidents.

As an option you can order a Combination Trigger (Set Trigger) for your VOERE-LBW.

2.4.2 Open Sights

2.4.2.1 Standard Model



Front sight height adjustments Insert a 2 mm socket key from above into the screw in front of the sight. The sight is spring-supported.

Screwing out: shoots higher

Screwing in: shoots lower

Rear sight

Loosen the fixing screw (1.5mm) in the center of the sight. To shoot more to the left, move the sight left; light taps if necessary (plastic or wooden mallet).

To shoot right, move the sight right.

Finally tighten the fixing screw (gently)

2.4.3 Mounting of telescopic sight



The mounting surface as well as the threaded holes and the two plain locating holes offers many possibilities for your own scope mount.

VOERE also has a scope mount rail available which accommodates the whole range of economical mountings on the world market. In addition, VOERE has a quick detachable precision mount for quick release and exchange of scopes on the market (LBW-D: base for the Q/D mount is already fitted).

3. Care and Maintenance

When taking care of the gun you should only use materials which are intended for this purpose.

3.1 Care

3.1.1 Barrel

After shooting, before long storage, as well as after carrying the gun, especially in humid and damp conditions, treat the breech and barrel with suitable gun oil. Barrel and breech must be thoroughly degreased before shooting. In cases of heavy deposits of firing residues we recommend treatment with chemical barrel cleaners.

PLEASE NOTE:

Follow the instructions and warnings of the manufacturer of the cleaning agents carefully.

3.1.2 Metal Parts

Always keep all metal parts clean and lightly oiled.

3.1.3 Stock

All wooden stocks are oiled. We recommend regular treatment with commercial stock care products.

PLEASE NOTE:

Gun oil is not suitable for stock care

3.1.4 Optics

See manufacturer's care instructions

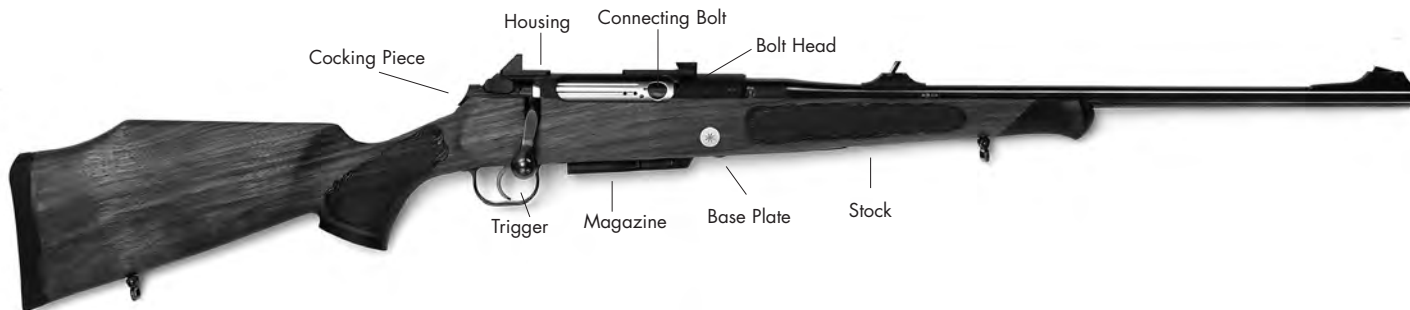
3.2 Maintenance

Bring your gun to your specialist dealer for inspection and maintenance before the hunting season and hunting trips. Like your car, your gun is also a piece of technical equipment which needs regular inspection and maintenance.

PLEASE NOTE:

The maintenance of your gun should only be carried out by an authorised specialist dealer.

4. Technical Information



4.1.1 Length

The **total length** depends on the barrel length, as well as the type of stock. It measures around 112 cm with a 60 cm barrel and standard calibre.

The **length of the barrel** is 60 cm with standard calibres, optionally 51 cm. The length of the barrel with magnum calibres is 65 cm, optionally 55 cm. Other barrel lengths on request.

4.1.2 Weight

The weight depends on the stock type, safety options, barrel and equipment of the gun. The weight is from 2,7 kg upwards.

4.1.3 Magazine Capacity

The Magazine Capacity depends on the legal requirements, as well as the calibre. Normally your VOERE-LBW is supplied with a 3 shot magazine. A 5-shot magazine is available (Standard calibers).

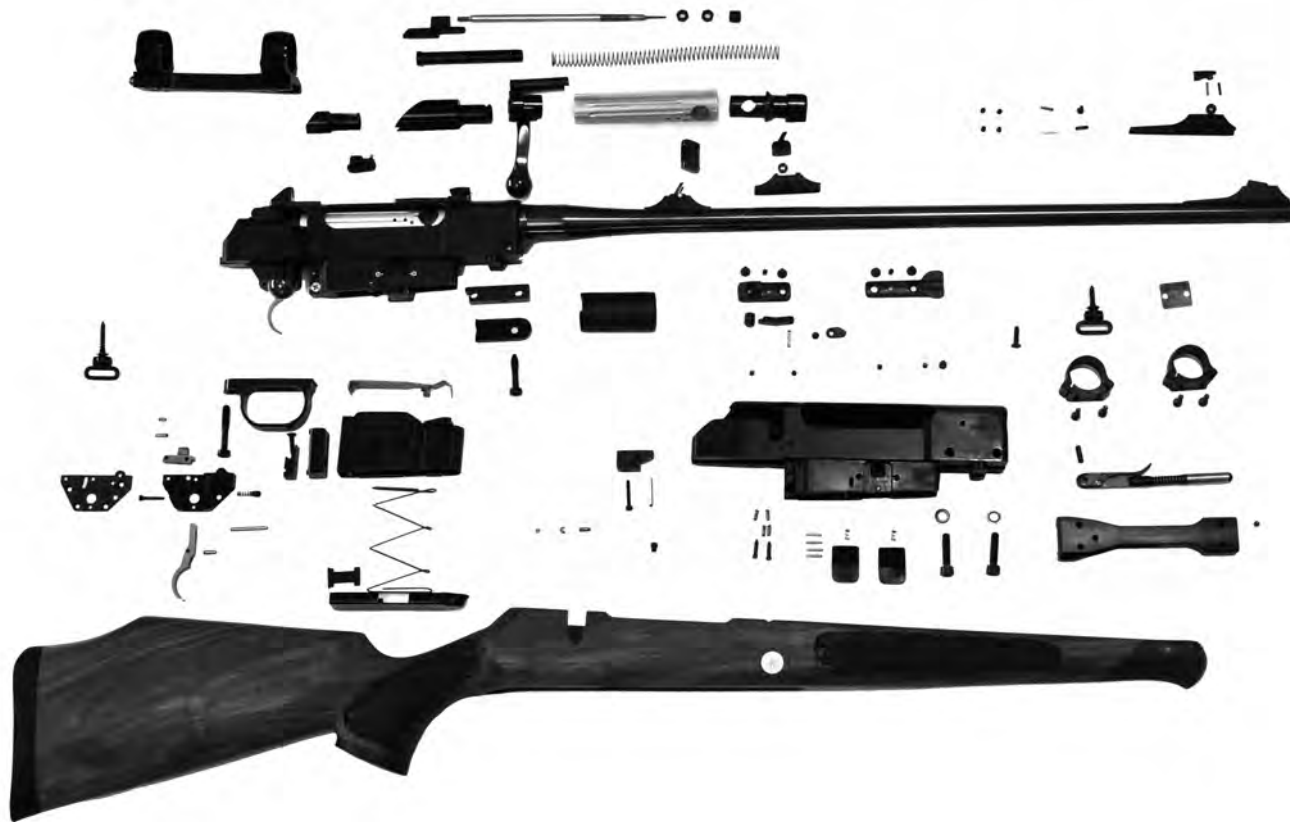
4.1.4 Chamber Lock

If a chamber lock is needed this is available on no extra charge on request.

Note on assembly or disassembly of the bolt lock that the bolt lock screw must be removed.

4. Technical Information

4.2. Exploded View



4. Technical Information – 4.3. Caliber Table

Caliber	Magazine Group	Bolt Head
.222 Rem.Mag.	1	MI
.222 Rem.Mag.	1	MI
.223 Rem.	1	MI
.22-250	2	Sta
6,5x47 Lapua	18	ST
6,5x55	3	ST
.243 Win.	4	ST
.308 Win.	5	ST
8x57IS	6	ST
9,3x62	7	ST
.25-06	8	ST
.270 Win.	8	ST
.30-06	8	ST
6,5x57	8	ST
7x57	8	ST
7x64	8	ST

* For a change within one magazine group only the barrel will be changed

* For a change between different magazine groups barrel and magazine have to be changed

Caliber	Magazine Group	Bolt Head
.300 Win.Mag.	15	MA
6,5x68	10	ME
7mm Rem.Mag.	10	MA
8x68 S	10	ME
6,5x63 Messner	17	ME
.338 Win.	16	MA
.300 Wby.Mag.	11	MA
.375 H&H	11	MA
.270 WSM	12	MA
.300 WSM	12	MA
7mm WSM	12	MA
.338 Lapua Mag.	14	LM

* For a change between different bolt groups the bolt head has to be changed as well

* For a change to and from cal. .375 H&H the spacer has to be changed as well

* A change in cal. .338 Lapua Magnum is not possible

5. Options

5.1.1 Case



A sturdy case (lockable) accommodates the LBW on journeys, with spare barrel, two telescopic sights including mountings and other extras.

5.1.2 Combination Trigger

Your VOERE-LBW is delivered as standard with an adjusted direct trigger. If this does not correspond with your hunting preferences, you have the possibility of building in a combination trigger. The installation can also be carried out later by specialists authorised by us.

5.1.3 Spare Magazine



As an accessory a 5 shot magazine for standard calibres and a 4-shot magazine for Magnum calibres are available.

5.1.4 Stock

Stocks in special selected quality are available.

Interchangeable stocks for LBW-D (Take-Down) in various qualities and shapes are available as an accessory.

5.1.5 Barrel

Depending on the kind of use and kind of stock a hunting barrel, a Varmint barrel, a Match barrel, a hunting carbon barrel and a carbon Varmint barrel are available resp. changeable.

5.1.6 Scope Mount for LBW



We recommend the VOERE Q/D Precision Scope Mount for your rifle. The Q/D mount allows to change between various sights without zeroing each time.

Alternatively we can offer a rail for fixed mounting of the scope.

5. Options

5.1.7 Carbon version



Depending on model an version a carbon barrel and/or carbon stock can be ordered. The advantages of carbon are less weight, no rust on the barrel, mat black surface.

5.1.8 Muzzle break

For special calibres a muzzle break can be offered. Factory-made carbon barrels are already equipped with an appropriate thread.

6. Guarantee Conditions

6.1.1 Manufacturer's Guarantee

The VOERE manufacturer's guarantee is in addition to the dealer's legal obligations, provided that the supplied gun form is returned completed to VOERE within ten days of purchase. The guarantee is only valid for the first owner, who lives in the land of purchase.

The guarantee applies only to the metal and plastic parts of the gun and to original Voere telescopic sight mounts, but not to the optics of the sight. Wooden parts of the gun require special care, and, as a product of nature, undergo natural changes. A guarantee for wooden parts is excluded.

The guarantee covers all defects and damage of the gun (metal and plastic parts) that can be shown to be due to material or production defects. In this connection the manufacturer accepts the costs for materials and labour. For the carrying out of work under the guarantee

the gun should be delivered to an authorised dealer or the production company in Kufstein.

The customer bears the risks and costs for the transport of the gun. Work under the guarantee may involve repair or replacement of faulty parts, according to the choice of the manufacturer, with replaced parts becoming the property of the manufacturer.

The accuracy of a gun is dependent on many factors. The most important factor is the ammunition. Not every barrel shoots as well with every sort of ammunition, there may be significant differences in performance. The sights and their mounting is equally important. Parallax, reticle loose, defective or mis-adjusted and faulty mounting are the most common causes of unsatisfactory shooting

6. Guarantee Conditions

performance. Ammunition of the same make and the same processing can vary in shooting performance and impact position from batch to batch and from gun to gun. With optimally chosen selected ammunition, sights and mounting we guarantee and excellent shooting performance for our weapons.

Complaints about the shooting performance must be made in writing within 20 days of the purchase date. We reserve the right to give the gun to an independent institute for checking. Should a superb shooting performance be confirmed there, we have the right to reclaim the associated costs from the customer.

Extent of the guarantee

Work under the guarantee neither extends nor renews the guarantee period, neither for the gun nor the parts replaced. The guarantee period for the parts replaced ends with the guarantee period for the whole gun.

The guarantee does not apply to:

Normal wear and tear, damage due to non-observance of the user manual or safety regulations, improper use or treatment and if the gun shows signs of mechanical damage.

Damage due to acts of God or environmental influences.

Repairs, work on or modifications to the gun by unauthorised workshops or other people.

Use of reloaded or not CIP approved ammunition

The guarantee does not apply to sights and telescopic sight mountings from manufacturers other than VOERE

Further or other claims, in particular those for compensation for damage apart from the gun (consequential damage) are – insofar as liability is not rigorously legally specified – excluded

This rifle, of which the Serial No. is printed on the reverse side of this card, was tested and approved by an official of the proof house in Vienna or Ferlach respectively.

Further tests have taken place at our factory shooting ranges and before despatch. Every single component has passed an extraordinary and very effective control system especially in regard to accuracy of measures and quality of material.

Therefore we are able to grant you a

GUARANTEE EXTENDING TO 3 YEARS

from the time of purchase for defective material or faulty manufacturing.

**Read enclosed safety regulations very carefully
before using your weapon!**

Serial No.:



VOERE GmbH
Unter Stuhm 56 · A-6330 Kufstein/Tirol
Tel. +43-(0)5372-62547 · Fax +43-(0)5372-65752
voere@oon.at · www.voere.com

VOERE Präzisionstechnik GmbH

Untere Sparchen 56

A-6330 Kufstein/Tirol



Untere Sparchen 56 · A-6330 Kufstein/Tirol

☎ +43-(0)5372-62547 · Fax +43-(0)5372-65752

voere@aon.at · www.voere.com