



VOERE

Tirolerin 20-06

User Manual

Caution:

Read the complete user manual before using the rifle. Your dealer will be happy to answer any questions you may have. Ensure you are completely familiar with its operation before using the rifle.

List of contents

1. General Safety Rules	4	3. Care and Maintenance	16
1.1.1 General Safety Rules in Handling of Guns	4	3.1 Care	16
1.1.2 Unload your gun	5	3.1.1 Barrel	16
2. User Manual	6	3.1.2 Metal Parts	16
2.1 Disassembly of the gun	7	3.1.3 Stock	16
2.1.1 Unlock of bolt lock	7	3.1.4 Optics	16
2.1.2 Remove bolt assembly from the rifle	7	3.2 Maintenance	16
2.1.3 Changing the bolt head (Option Interchangeable bolt)	7	4. Technical Information	17
2.1.4 Demounting and reassembling of bolt assembly	8	4.1 Measurements	17
2.1.5 Remove the magazine	8	4.1.1 Length	17
2.1.6 Removal of the stock	9	4.1.2 Weight	17
2.1.7 Removal of the barrel	9	4.1.3 Magazine Capacity	17
2.2 Assembly of the gun	10	4.1.4 Exploded View	18
2.2.1 Assemble action with barrel	10	4.1.5 Caliber Table	19
2.2.2 Recognition of correct calibre	10	5. Options	20
2.2.3 Assemble Action with Barrel and Stock	10	5.1.1 Case	20
2.2.4 Assemble bolt into action	11	5.1.2 Interchangeable bolt	20
2.2.5 Mounting telescopic sight	11	5.1.3 Interchangeable barrel for KK calibers	20
2.2.6 Loading of the magazine	12	5.1.4 Top mounts for telescopic scopes	20
2.2.7 Exchange of small bore (=KK-)barrel	12	5.1.5 Stock	20
2.3 Function of the gun	13	5.1.6 Muzzle brake	20
2.3.1 Safety and Bolt Lock Cocking Piece	13	6. Guarantee Conditions	21
2.3.2 Loading, shooting and repeating	14	6.1.1 Manufacturer's Guarantee	21
2.3.3 Unloading the gun	14		
2.4 Operation, Adjustments	15		
2.4.1 Trigger	15		
2.4.2 Open sights	15		
2.4.3 Mounting of telescopic sight	15		

1. General Safety Rules

Your new VOERE hunting rifle Model TIROLERIN differs from other bolt-action rifles in the special features of its construction. Always bear in mind the need for care in handling weapons as well as the legal requirements. First check that you have the correct User Manual: the model number and the calibre are marked on the barrel.

1.1.1 General Safety Rules in Handling of Guns

- Ensure that the gun and ammunition never fall into unauthorized hands.
- Always store the gun and ammunition separately, under lock and key, away from unauthorized access.
- Observe the applicable legal regulations for the storage and use of guns and ammunition.
- Familiarise yourself thoroughly with the operation of your gun and practice all adjustments and functions with an unloaded gun before using it.
- Regard every rifle as loaded and cocked, unless you have established the contrary by opening the breechblock and examining the magazine, chamber and barrel. An unloaded gun should be handled like a loaded gun.
- Always ensure that the muzzle is pointed in a direction where there is no danger to people or property.
- Always ensure that no person is standing beside the ejection port.
- Before loading ensure that the barrel is free, and thereafter make certain that no foreign bodies (e.g. water, snow, ice, earth) can get in.
- Only use undamaged CIP certified ammunition, with clearly the right calibre for the rifle. Faultily reloaded ammunition can damage your gun and lead to serious injuries.
- Only load your weapon directly before its use.

1. General Safety Rules

- Cock your rifle (release the safety catch) only when you are ready to shoot. When cocking (releasing the safety catch) keep the barrel pointing in a safe direction.
- Before each shot check the area in front of and behind the target.
- Only point your gun towards a target that you have clearly recognised.
- Put your finger on the trigger only when you intend to shoot.
- If a cartridge does not fire, wait 60 seconds before opening the breech. This is to avoid the danger of a delayed ignition.
- When shooting, you, and people in the area, should wear ear protection (earplugs) and suitable shooting goggles.

1.1.2 Unload your gun

- Before crossing obstacles
- Before climbing up to, or down from a raised hide
- Before entering a building
- Before entering a vehicle
- Before entering an inhabited area
- and also when you temporarily put the gun down or hand it to someone

2. User Manual

PLEASE NOTE:

On assembly, pay special attention that the barrel, breech and magazine correspond with the calibre. In any case, make sure that the gun is unloaded and the magazine removed.



Unpacking:

Your rifle and bolt are delivered separately. On assembly of the bolt note that the guidance slot of the bolt sleeve and bolt body line up (see pt. 2.2.4)! If necessary twist the bolt sleeve accordingly.



2.1 Disassembly of the gun

2.1.1 Unlock of bolt lock

To open the bolt lock when the safety is on the cocking knob has to be pressed a few millimetres forwards, the chamber will be opened at the same time. Now it is released and safe. Please always consider the relevant safety instructions. In the unsafe position the bolt assembly can be opened at any time.



In case the bolt lock does not correspond to the hunting habits in the hunting area it can be deactivated at any time by an authorized gunsmith.

2.1.2 Remove bolt assembly from the rifle



Free the bolt by turning the bolt handle through 60°, pull it to the rear while pressing the bolt stop release on the left (in any case, before the bolt is at its rearmost position). The bolt can now be easily removed from the housing. To replace the bolt in the housing, ensure it is centred and close it with a turn to the right.

Do not use any force!

2.1.3 Changing the bolt head (Option Interchangeable bolt)

Decock the rifle (see Pt. 2.3.1.2). Take the bolt assembly out of the housing (see Pt. 2.1.2). Press your finger nail, a coin from bottom-up against the cross bolt which can be taken out upon its release.



Now the bolt head can be removed forwards and changed against the new bolt head fitting to the new caliber group (see Pt. 4.1.5). Reassembling has to be done in the opposite direction.

2.1 Disassembly of the gun

2.1.4 Demounting and reassembling of the bolt assembly

The bolt action has been taken out of the system. The bolt assembly is released, which means the cocking knob is in the safe position.



Fix the bolt assembly with one hand, push back the plunger with the other hand, press the cocking knob a few millimetres forwards and turn the bolt sleeve clockwise by approx. 90° to the right (Bayonet lock). Now the bolt sleeve and firing pin resp. manual safety cocking can be removed from the body.



Reassembling has to be done in the opposite direction. Introduce the firing pin into the bolt body. The marking should show into the direction of the CAM-curve. The bolt sleeve will be fixed by turning it 90° to the left.

In case the bolt sleeve cannot be introduced as far as necessary to touch the bolt body the operation wheel probably has to be turned slightly.

Do not use any force!

2.1.5 Remove the magazine



On pressing the magazine latch in front of the magazine it will fall out.

2.1 Disassembly of the gun

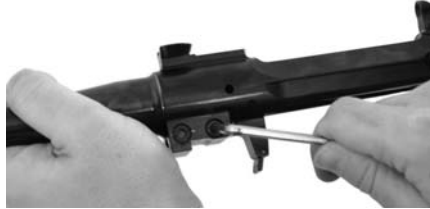
2.1.6 Removal of the stock



To remove the stock (Take Down) press the front lever – the complete system with barrel can be tipped up over the rear side and withdrawn with a light tug forward from the stock.



2.1.7 Removal of the barrel



The bolt assembly has been removed. Loosen the socket-head screws (SW 4) on the side of the housing. When the screws are loose the barrel can be taken out of the housing.



2.2 Assembly of the gun

2.2.1 Assemble action with barrel



Push the barrel (1) from the front into the action (2). Ensure that the sight or the index groove is uppermost, or the inscription is on the right. The fine tolerances require the barrel to be aligned exactly with the housing. When the barrel is fully inserted, use a socket key (SW4) to tighten the clamp screws (3 and 4) **hand tight**.

2.2.2 Recognition of correct calibre

Make absolutely sure that the calibre of barrel, action and magazine correspond. The calibre of the barrel is marked on its right hand side. The calibre of the magazine is on its side. The type of action is engraved on the breechblock, f. i. MI (Mini), (ST) Standard. Use the calibre group table (see Pt. 4.1.5).

Use the components only in a combination where it is absolutely clear that they are compatible.

PLEASE NOTE:

Ensure that assembly is performed with the bolt extracted. Ensure that the calibre of bolt, barrel and magazine correspond

2.2.3 Assemble Action with Barrel and Stock



Put the action with barrel (muzzle forwards) in the stock. The bolt assembly should be removed from the system. First insert the trigger and tilt the action into the stock. Don't use any force.

When the action sits in the stock, the lever locks hearable.

2.2 Assembly of the gun

2.2.4 Assemble bolt into action



Take the bolt assembly into the right hand. With the other hand press the bolt stop on the left side of the action. Push the bolt assembly with the bolt lever into the chamber. The bolt can be pushed until the bolt lever can be turned through 60° downwards. Only when the bolt lever is in the lower position the gun is locked.

If the bolt cannot be fully introduced into the chamber, check whether the bolt is correctly assembled and the barrel has been mounted correctly.

Do not use any force!

2.2.5 Mounting telescopic sight



Place the telescopic sight with upper part initially tilted at 45° on the front end of the mounting plate (see illustration), with the fixing lever open.



Now rotate the scope into the straight position until the index screw contacts the plate.

Now close the fixing lever to secure the mounting.



The base of the detachable scope mount is already integrated with the rifle. Various top mounts for different scopes are available.

2.2 Assembly of the gun

2.2.6 Loading of the magazine



Make sure that the magazine corresponds to the calibre chosen. The calibre is marked on the magazine. The magazine is placed in the magazine slot. Ensure that the magazine latches.

The model TIROLERIN is using a 2-row-magazine which means it can also be loaded through the ejection port.

2.2.7 Exchange of small bore barrel

The assembly of the rimfire unit is similar to the exchange of the barrel. Introduce the exchange barrel from the front (see 2.2.1)

The bolt assembly is exchanged completely against the small bore assembly. Instead of the magazine the small bore adapter, in which the small bore magazine is fitted, is to be exchanged.



2.3 Function of the gun

2.3.1 Safety and Bolt Lock



The safety system of Model Tirolerin is based on a decocked firing pin spring. With the cocking knob the firing pin spring is tensioned shortly before resp. released immediately after the shot; on reloading it remains tensioned.

In safe (released) position the bolt handle is locked against unintended opening of the action while the weapon is carried. If the bolt lock does not correspond with the users habits it can be deactivated by an authorised gunsmith. In functioning the safety system works like a ball pen.

2.3.1.1 Cocking



With the thumb in the indentation of the tensioner, press forwards hard until it engages.

Pressing (tensioning) the safety knob exposes a red spot on the knob. The white spot disappears.

With a tensioned firing pin spring the tensioning indicator can be sensed below the cocking knob.



2.3.1.2 Decocking (releasing tension)



Press the cocking knob slightly forwards and gently release the cocking knob backwards. Now it is in a decocked (released) position.

In the decocked position the white spot is visible on the cocking knob. When the firing pin spring is released the indicator below the cocking knob disappears.



2.3 Function of the gun

2.3.2 Loading, shooting and repeating

Introduce the full magazine from below into the gun. Ensure the magazine catch engages with the magazine. In case your gun has a bolt lock the cocking knob has to be pressed a few millimeters forwards to be able to open the chamber and to load a round from the magazine into the breech.



Now the gun is loaded but not cocked and therefore safe. The rifle is cocked by pressing the cocking knob forward. Once the gun is cocked repeated fire or unloading is possible at any time.

VOERE Tirolerin can be loaded through the magazine or directly through the ejection port.



PLEASE NOTE:

When loading ensure that the barrel is pointing in a safe direction.

2.3.3 Unloading the gun

Pay attention that the gun is fully unloaded after use. Do not just remove the magazine, but operate the action and make a visual check that the breech is empty. If necessary in the dark, check with a finger. In this way accidents can be avoided. On pressing and discharging the cocking knob the gun is released.

PLEASE NOTE:

As long as the cocking knob is in the forward, cocked position, the cocking piece of the rifle tensions itself automatically with every repeated shot. When shooting is complete, the cocking handle should be released immediately (safety on)

2.4 Operation, Adjustments

2.4.1 Trigger

The VOERE bolt action rifle Tirolerin is equipped with a combi trigger (Single Set Trigger and Direct Trigger). The trigger pressure is factory set near the lightest possible setting for international safety standards. Any adjustment must be done by the factory or an authorised dealer, to avoid accidents.



An authorised gunsmith can change the Combination Trigger (Single Set Trigger) into a Direct Trigger.

2.4.2 Open sights



Front sight height adjustments
Insert a 2 mm socket key from above into the screw in front of the sight.
The site is spring-supported.
Screwing out: shoots lower
Screwing in: shoots higher

Rear sight

Loosen the fixing screw (1.5mm) in the center of the sight. To shoot more to the left, move the sight left; light taps if necessary (plastic or wooden mallet). To shoot right, move the sight right. Finally tighten the fixing screw (gently).

2.4.3 Mounting of telescopic sight



The model Tirolerin is equipped with the base for a VOERE quick detachable mounting system. Without the telescopic sight the base can be used as open sight.

VOERE is offering top mounts for a wide range of sights. If needed please contact us for further information or visit the VOERE Web-Site www.VOERE.com.

Please keep in mind that a bad sighting aid system can cause a bad shooting performance.

3. Care and Maintenance

3.1 Care

When taking care of the gun you should only use materials which are intended for this purpose.

3.1.1 Barrel

After shooting, before long storage, as well as after carrying the gun, especially in humid and damp conditions, treat the breech and barrel with suitable gun oil. Barrel and breech must be thoroughly degreased before shooting. In cases of heavy deposits of firing residues we recommend treatment with chemical barrel cleaners.

PLEASE NOTE:

Follow the instructions and warnings of the manufacturer of the cleaning agents carefully.

3.1.2 Metal Parts

Always keep all metal parts clean and lightly oiled.

3.1.3 Stock

All wooden stocks are oiled. We recommend regular treatment with commercial stock care products.

PLEASE NOTE:

Gun oil is not suitable for stock care

3.1.4 Optics

See manufacturer's care instructions

3.2 Maintenance

Bring your gun to your specialist dealer for inspection and maintenance before the hunting season and hunting trips. Like your car, your gun is also a piece of technical equipment which needs regular inspection and maintenance.

PLEASE NOTE:

The maintenance of your gun should only be carried out by an authorised specialist dealer.

4. Technical Information

4.1 Measurements



4.1.1 Length

The **total length** depends on barrel length as well as the type of stock. It measures about 105 cm with a 55 cm barrel.

The **length of the barrel** is 55 cm with standard calibers.
Other barrel lengths on request.

4.1.2 Weight

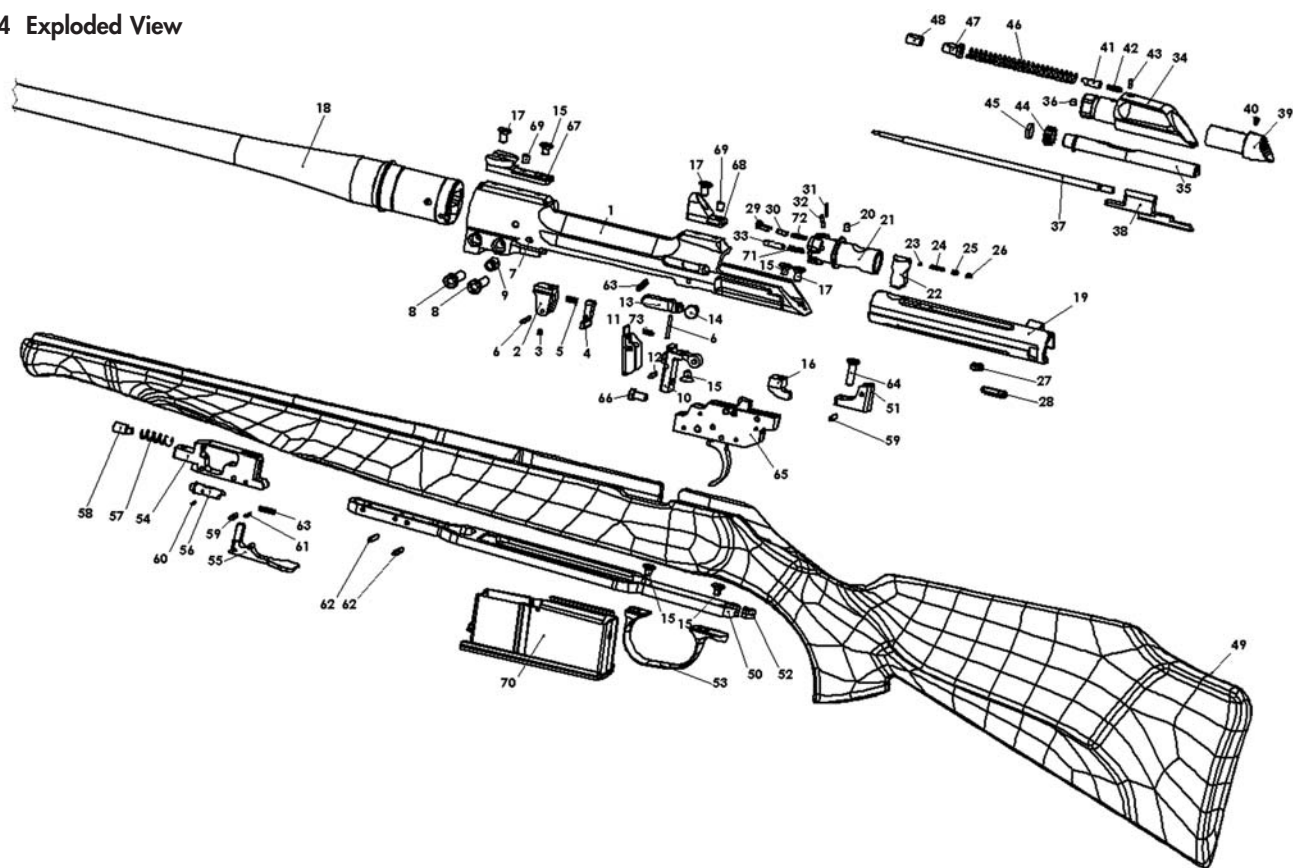
The weight depends on the stock type, safety options, barrel and equipment of the gun. The weight is from 2,7 kg upwards.

4.1.3 Magazine Capacity

The Magazine Capacity depends on the legal requirements as well as the caliber. Normally your TIROLERIN is supplied with a 3-shot-magazine. A 5-shot-magazine is available (Standard calibers).

4. Technical Information

4.1.4 Exploded View



4. Technical Information

4.1.5 Caliber Table

Group	Bolt size	Caliber	Change within group	Change between Mini and Standard (Option)	Change between KK and Mini / Standard
Group 1	Rimfire (KK)	.17 HMR	barrel exchange	Exchange of barrel, magazine and bolt head	Exchange of barrel, magazine and bolt complete
		.17 HM2	barrel exchange		
		.22 I.r.	barrel exchange		
		.22 WMR	barrel exchange		
Group 2	Mini (MI)	.222 Rem.	barrel exchange	Exchange of barrel, magazine and bolt head	Exchange of barrel, magazine and bolt complete
		.223 Rem.	barrel exchange		
Group 3	Standard (ST)	.270 Win	barrel exchange	Exchange of barrel, magazine and bolt head	Exchange of barrel, magazine and bolt complete
		6,5x55	barrel exchange		
		6,5x57	barrel exchange		
		7x57	barrel exchange		
		7x64	barrel exchange		
		8x57IS	barrel exchange		
		9,3x62	barrel exchange		
		.243 Win.	barrel exchange		
		.308 Win.	barrel exchange		
		.25-06	barrel exchange		
		.270 Win.	barrel exchange		
.30-06	barrel exchange				

5. Options

5.1.1 Case



A sturdy case (lockable) accommodates the Tirolerin on journeys, with spare barrel, two telescopic sights including mountings and other extras.

5.1.2 Interchangeable bolt

As a standard option the TIROLERIN is delivered with a bolt for standard calibers. On option a bolt with interchangeable bolt head between Mini and Standard calibers is available.

5.1.3 Interchangeable barrel for small bore calibers

The VOERE Tirolerin can also be used for

rimfire rounds. For this purpose an interchangeable carbon barrel with interchangeable chamber and magazine adapter is available.

5.1.4 Top mounts for telescopic scopes

Refer to the folder for scope mounts or contact us for further information at www.VOERE.com.

5.1.5 Stock

Various synthetic stocks or stocks in special qualities are available on request.

5.1.6 Muzzle brake



Due to the light weight of the model Tirolerin the use of a muzzle brake for heavy calibers

can be useful.

A muzzle brake in Titan is available on option – in accordance with a special thread on the barrel.

6. Guarantee Conditions

6.1.1 Manufacturer's Guarantee

The VOERE manufacturer's guarantee is in addition to the dealer's legal obligations, provided that the supplied gun form is returned completed to VOERE within ten days of purchase. The guarantee is only valid for the first owner, who lives in the land of purchase.

The guarantee applies only to the metal and plastic parts of the gun and to original Voere telescopic sight mounts, but not to the optics of the sight. Wooden parts of the gun require special care, and, as product of nature, undergo natural changes. A guarantee for wooden parts is excluded. The guarantee covers all defects and damage of the gun (metal and plastic parts) that can be shown to be due to material or production defects. In this connection the manufacturer accepts the costs for materials and labour. For the carrying out of work under the guarantee the gun should be delivered to an authorised dealer or the production company in Kufstein.

The customer bears the risks and costs for the

transport of the gun. Work under the guarantee may involve repair or replacement of faulty parts, according to the choice of the manufacturer, with replaced parts becoming the property of the manufacturer.

The accuracy of a gun is dependent on many factors. The most important factor is the ammunition. Not every barrel shoots as well with every sort of ammunition, there may be significant differences in performance. The sights and their mounting is equally important. Parallax, reticle loose, defective or misadjusted and faulty mounting are the most common causes of unsatisfactory shooting performance. Ammunition of the same make and the same processing can vary in shooting performance and impact position from batch to batch and from gun to gun. With optimally chosen selected ammunition, sights and mounting we guarantee and excellent shooting performance for our weapons. Complaints about the shooting performance must be made in writing within 20 days of the purchase date. We reserve the right to give the gun to an independent institute for

checking. Should a superb shooting performance be confirmed there, we have the right to reclaim the associated costs from the customer.

Extent of the guarantee

Work under the guarantee neither extends nor renews the guarantee period, neither for the gun nor the parts replaced. The guarantee period for the parts replaced ends with the guarantee period for the whole gun.

The guarantee does not apply to:

Normal wear and tear, damage due to non-observance of the user manual or safety regulations, improper use or treatment and if the gun shows signs of mechanical damage.

Damage due to acts of God or environmental influences.

Repairs, work on or modifications to the gun by unauthorised workshops or other people.

6. Guarantee Conditions

Use of reloaded or not CIP approved ammunition.

The guarantee does not apply to sights and telescopic sight mountings from manufacturers other than VOERE.

Further or other claims, in particular those for compensation for damage apart from the gun (consequential damage) are – insofar as liability is not rigorously legally specified – excluded.

This rifle, of which the Serial No. is printed on the reverse side of this card, was tested and approved by an official of the proof house in Vienna or Ferlach respectively.

Further tests have taken place at our factory shooting ranges and before despatch. Every single component has passed an extraordinary and very effective control system especially in regard to accuracy of measures and quality of material.

Therefore we are able to grant you a

GUARANTEE EXTENDING TO 3 YEARS

from the time of purchase for defective material or faulty manufacturing.

**Read enclosed safety regulations very carefully
before using your weapon!**

Serial No.:



VOERE GmbH
Unter Strohalm 56 · A-6330 Kufstein/Tirol
Tel. +43-(0)5372-62547 · Fax +43-(0)5372-65752
voere@oon.at · www.voere.com

VOERE Präzisionstechnik GmbH

Untere Sparchen 56

A-6330 Kufstein/Tirol



Untere Sparchen 56 · A-6330 Kufstein/Tirol

☎ +43-(0)5372-62547 · Fax +43-(0)5372-65752

voere@aon.at · www.voere.com