

# VOERE S16



## **Caution:**

**Read the complete user manual before using the rifle. Your dealer will be happy to answer any questions you may have. Ensure you are completely familiar with its operation before putting it into service.**

# S16 Table of contents

<b>1</b>	<b>General safety rules:</b>	<b>4</b>
1.1.1	General Safety Rules in the Handling of Guns	4
1.1.2	Unload your gun	5
<b>2</b>	<b>User Manual</b>	<b>6</b>
2.1	Operation	7
2.1.1	Removing the bolt	7
2.1.2	Installing the bolt	7
2.1.3	Cocking the rifle	7
2.1.4	Loading the rifle	8
2.1.5	Safety	9
2.1.6	Shooting	10
2.1.7	Scope mounting rail (not included in delivery)	10
2.1.8	Muzzle brake	10
2.2	Options and adjustments	11
2.2.1	Length adjustment of the stock	11
2.2.2	Height adjustable cheekpiece	11
2.2.3	Freeland rail	11
2.2.4	Hand-Stop, Sling swivel (option)	12
2.2.5	Picatinny-rail for mounting accessories (option)	12
2.2.6	Carrying sling (option)	12
<b>3</b>	<b>Maintenance</b>	<b>13</b>
3.1.1	Taking the action out of the stock	13
3.1.2	Adjustment of the trigger	13
3.1.3	Re-cocking rifle	14
<b>4</b>	<b>Care</b>	<b>14</b>
4.1.1	Barrel	14
4.1.2	Metal parts	14
4.1.3	Optics	14
4.2	Maintenance check	15

<b>5</b>	<b>Measurements</b> .....	<b>15</b>
5.1.1	Length.....	15
5.1.2	Weight .....	15
<b>6</b>	<b>Technical information</b> .....	<b>16</b>
6.1.1	Explosion view.....	16
<b>7</b>	<b>Guarantee Conditions</b> .....	<b>17</b>
7.1.1	Manufacturer's Guarantee .....	17

# **1 General safety rules:**

Your **VOERE S16** rifle differs from other bolt-action rifles in the special features of its construction. Always bear in mind the need for care in handling weapons as well as the legal requirements.

First, check that you have the right user manual.

## **1.1.1 General Safety Rules in the Handling of Guns**

- Ensure that the gun and ammunition never fall into unauthorized hands.
- Always store the gun and ammunition separately, under lock and key, away from unauthorized access.
- Observe the applicable legal regulations for the storage and use of guns and ammunition.
- Familiarise yourself thoroughly with the operation of your gun and practice all adjustments and functions with an unloaded gun before using it.
- Regard every rifle as loaded and cocked, unless you have established the contrary by opening the bolt and examining chamber and barrel. An unloaded gun should be handled like a loaded gun.
- Always point the muzzle in a safe direction where is no danger to people or property.
- Before loading ensure that the barrel is free and thereafter make certain that no foreign bodies (e.g. Water, snow, ice, earth) can get in.
- Only use undamaged CIP certified ammunition, with clearly the right calibre for the rifle. Faultily reloaded ammunition can damage your gun and lead to serious injuries.
- Only load your weapon directly before its use.
- Cock your rifle (or release the safety catch) only when you are ready to fire. When cocking (releasing the safety catch) keep the barrel pointing in a safe direction.

- Before each shot check the area in front of and behind your target.
- Only point your gun towards a target that you have clearly recognised.
- Only put your finger on the trigger when you intend to fire.
- If a cartridge does not fire, wait 60 seconds before opening the bolt, in order to avoid the danger of a delayed ignition.
- When shooting, you, and people in the area, should wear ear protection (earplugs) and suitable shooting goggles.

#### 1.1.2 **Unload your gun**

- before crossing obstacles
- before climbing up to, or down from a raised hide
- before entering a building
- before entering a vehicle
- before entering an inhabited area
- when you temporarily put the gun down or hand it

## 2 User Manual



## 2.1 Operation

### 2.1.1 Removing the bolt



Take out the bolt by turning the bolt handle 60° upwards. Pull it to the rear while pressing the bolt catch on the upper left side of the receiver (see arrow). The bolt can now be easily removed from the action.

**Make sure your rifle is unloaded when removing the bolt!**  
**Do not use any force!**

### 2.1.2 Installing the bolt



Make sure the safety lever is aligned with the bolt grip. Press the trigger and slide in the bolt forward until it is fully closed, then close the bolt grip by moving it 60° downwards. The rifle is now closed and cocked.

**Make sure your rifle is unloaded when fitting the bolt!**  
**Do not use any force!**

### 2.1.3 Cocking the rifle



Remove the magazine (see 2.1.4). Open the bolt, slide it backwards and close the bolt again. The bolt is now closed and cocked. While closing the force of the firing spring has to be overcome.

## 2.1.4 Loading the rifle

### The magazine



Press magazine release button underneath the magazine well while pulling the magazine out in order to remove the magazine.

Always load your rifle from the magazine. Loading your rifle by hand is only possible with the magazine removed from your rifle.

All STANAG AR-15 magazines can be used in your **VOERE S16** rifle.

Watch your local laws regarding maximum magazine capacity!

### Magazine loading



To load your magazine, lay a cartridge on top of the magazine between the magazine lips and press it straight downwards until the cartridge snaps in with a click.

Insert the magazine in the magazine well and push it in until the magazine catch locks the magazine in place.



### Last round bolt hold open



Depending on the AR-15 STANAG magazine you are using, the magazine follower might work as a last round bolt hold open, meaning that you are not able to close the bolt on an empty magazine.

Remove magazine to close the bolt.



## Loading the rifle with safety on



The rifle can be loaded in a safe manner as follows:

Place a cartridge as shown in 2.1.4.. Push the bolt handle forward until the safety lever can be engaged see picture above. Engage the safety by pushing down the safety lever, until the lever is in the down most position.

Now fully close the bolt by pushing the bolt grip forward and lowering it. The rifle is now loaded and in a safe condition.

## 2.1.5 Safety

The rifle is fitted with a firing pin safety, placed on the rear end of the bolt.

Press the safety lever downwards to engage the safety. When the safety is engaged, a white dot is visible.



Lift the safety lever in the upper position in order to disengage the safety. When the safety is disengaged, a red dot is visible.



### 2.1.6 Shooting



The rifle is fitted with a two stage trigger. Press the trigger gently until the first stage of the trigger. The rifle will fire by further increasing the pressure. Make sure always to point the rifle into a safe direction.

The trigger is adjustable. However the adjustment should only be done by instructed staff as a gunsmith.

### 2.1.7 Scope mounting rail (not included in delivery)



Several different scope mounts are available for the weapon. The figure above shows the S16 with the steel Picatinny-rail.

### 2.1.8 Muzzle brake



The rifles comes equipped with a fixed muzzle brake. Do not try to uninstall the muzzle brake as this could negatively affect the accuracy of you gun or damage it.

#### **CAUTION!**

**Do always use ear protection when shooting with a rifle equipped with muzzle brake!**

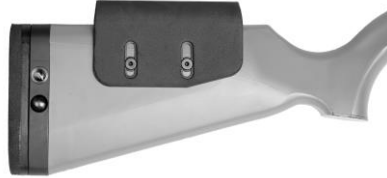
## 2.2 Options and adjustments

### 2.2.1 Length adjustment of the stock



The stock can be adjusted according to the size of the shooter and the shooting position. There is a quick adjustment on the rear of the stock. Press the button on the right side of the stock and slide the adjustment to the desired position. Release the button in one of the 5 pre-set notches.

### 2.2.2 Height adjustable cheekpiece



The rifle can be fitted with an adjustable cheek piece to adjust the height according to the shooter's preference.

The cheek rest can be adjusted in height by using either a three millimetre Allen key or a size 15 Torx key. Loosen the 4 screws for adjustment.

### 2.2.3 Freeland rail



The rifle is fitted with a Freeland rail on the fore-end of the stock. Freeland accessories can either be fitted on the holes in set positions of the rail or they can be clamped in any position of the rail.

An adapter from Freeland to UIT rail is available as well.



#### 2.2.4 Hand-Stop, Sling swivel (option)



A hand-stop can be fitted on the UIT-rail according to the shooters preference. The hand-stop can be used for finding the correct shooting position. It can also be used for mounting a shooting sling on the rifle.

Therefore the hand-stop has an adaptor for quick release sling swivels. Sling swivels are available in various sizes according to the shooting sling used.

#### 2.2.5 Picatinny-rail for mounting accessories (option)



For mounting accessories on the fore-end of the stock Picatinny-rails are available for the right and left side of the fore-stock.

Screw the mounts in the right position with the delivered screws onto the stock.

#### 2.2.6 Carrying sling (option)

A carrying sling can fit on the snap locks on both sides on the rear of the rifle. The front lock will fit on the UIT-rail in the front of the rifle. The rifle can be carried in that way on the back with a biathlon sling or on the side depending on the situation the rifle is used.



### 3 Maintenance

#### 3.1.1 Taking the action out of the stock



Open the screw on the UIT-rail that holds the action in the stock and take it out. An Allen key size 3 mm is required to unscrew the two action screws.

#### 3.1.2 Adjustment of the trigger

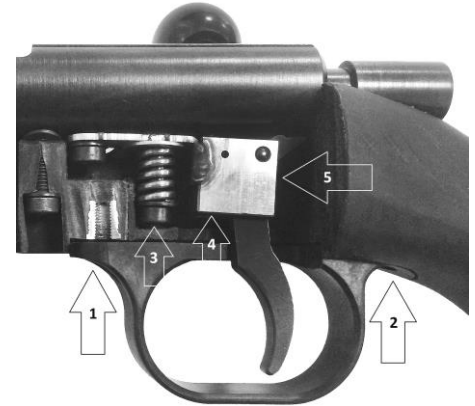
The trigger can be adjusted according to the shooters requirements. These adjustments need to be carried out by a qualified gunsmith, according to local laws and safety rules. In order to adjust the trigger, the trigger guard needs to be taken off. (See picture, screws 1 and 2).

##### **Trigger pull weight (3)**

The trigger pull weight is adjustable using a 3mm Allen key. Please watch local laws regarding minimal pull weights. The trigger can be adjusted in between 1kg and 2kg trigger pull weight. (See figure 3)

##### **Pre-travel (4)**

The length of pull of the first stage can be adjusted by the screw on the back of the trigger housing (see figure 4) with a 1.5mm Allen key.



##### **Sear engagement (5)**

The sear engagement must only be changed by qualified gunsmiths. By screwing in screw (5) with a 3mm Allen key sear engagement can be reduced, by screwing out sear engagement can be increased.

### 3.1.3 Re-cocking rifle

It is possible to unintentionally un-cock the rifle with opened bolt.



In order to cock the bolt you just have to turn the safety lever clockwise, until the cocking arm snaps into cocked position again. (see picture above)

## 4 Care

**Only use products for gun care, which are intended for this purpose.**

### 4.1.1 Barrel

Oil barrel including chamber after firing, before long term storage and after carrying your rifle, especially in wet or humid conditions. Remove oil before firing! We recommend using chemical cleaning to remove residue inside the barrel.

### Carbon

The barrel is housed in a Carbon fibre shell. Reinforced epoxy carbon is resistant against most chemical substances and climatic influences. However to be on the safe side either attest the chemical substance before using or ask your local advisor.

Any damaged barrel may not be used any more. Therefore take care that no mechanical, thermal, chemical or optical damages are on the barrel before shooting.

### ATTENTION:

**Follow instructions of gun care products in order to achieve best results and avoid injury or damage on your rifle or optics!**

### 4.1.2 Metal parts

Keep metal parts clean and slightly oiled.

### 4.1.3 Optics

Maintenance and cleaning are to be executed according to optics maintenance instructions.

## 4.2 Maintenance check

The rifle should be checked in continuous intervals by trained personnel.

### **ATTENTION:**

**Maintenance of you firearms must be done by trained personnel only!**

## 5 Measurements

### 5.1.1 Length

Max. overall length when the length adjustment of the stock on maximum around 108cm with 50cm barrel. In shortest adjustment overall length is 103cm.

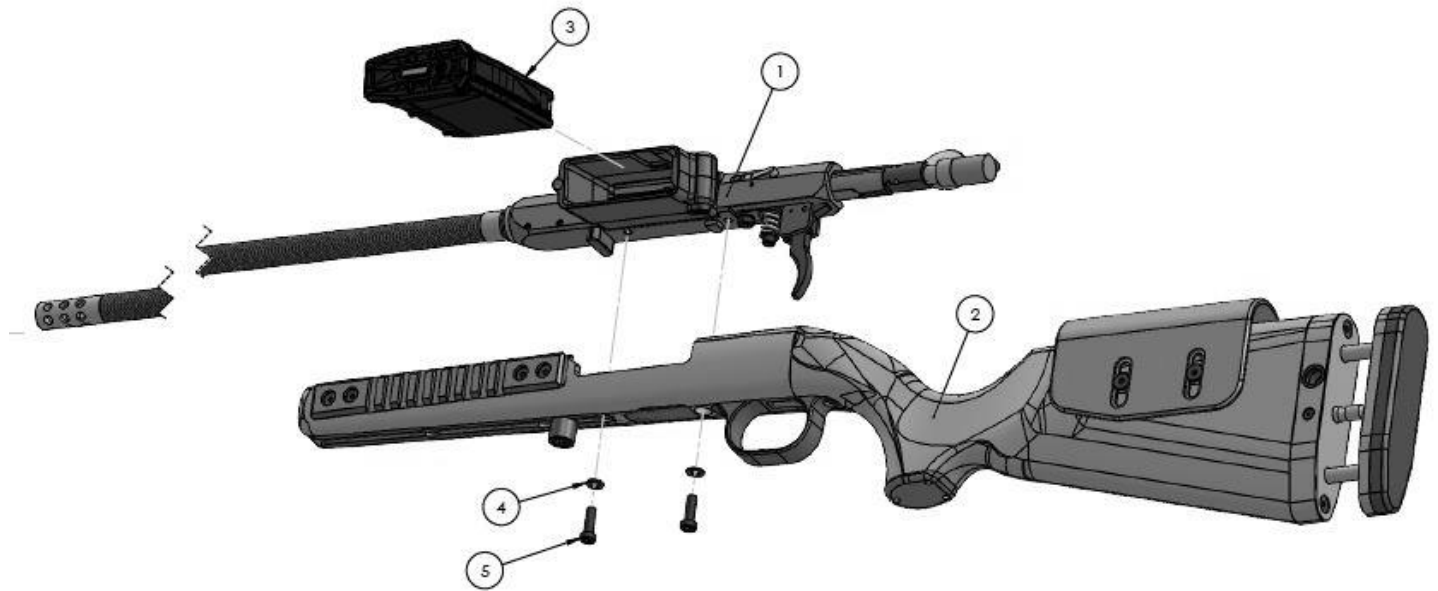
**The overall length** depends on the stock and barrel chosen. **The barrel length** can vary. Standard length is 50cm / diameter 15mm.

### 5.1.2 Weight

The weight depends on the stock configuration barrel chosen. In the previous mentioned configuration the rifle weights 2kg.

## 6 Technical information

### 6.1.1 Explosion view





## **7 Guarantee Conditions**

### **7.1.1 Manufacturer's Guarantee**

The VOERE manufacturer's guarantee is in addition to the dealer's legal obligations, provided that the supplied gun form is returned completed to VOERE within ten days of purchase. The guarantee is only valid for the First owner, who lives in the land of purchase. The guarantee applies only to the metal and Plastic parts of the gun and to original Voere Telescopic sight mounts, but not to the optics of the sight. Wooden parts of the gun require Special care, and, as a product of nature, undergo natural changes. A guarantee for Wooden parts are excluded. The guarantee covers all defects and damage of the gun (metal and plastic parts) that can be shown to be due to material or production defects. In this connection the manufacturer accepts the costs for materials and labour. For the carrying out of work under the guarantee the gun should be delivered to an authorised dealer or the production company in Kufstein. The customer bears the risks and costs for the transport of the gun. Work under the guarantee may involve repair or replacement of faulty parts, according to the choice of the manufacturer, with replaced parts becoming the property of the manufacturer. The accuracy of a gun is dependent on many factors. The most

important factor is the ammunition. Not every barrel shoots as well with every sort of ammunition; there may be significant differences in performance. The sights and their mounting is equally important. Parallax, Reticle loose, defective or misadjusted and faulty mounting are the most common causes of unsatisfactory shooting performance. Ammunition of the same make and the same processing can vary in shooting performance and impact position from batch to batch and from gun to gun. With optimally chosen selected ammunition, sights and mounting we guarantee and excellent shooting performance for our weapons. Complaints about the shooting performance must be made in writing within 20 days of the purchase date. We reserve the right to give the gun to an independent institute for checking. Should a superb shooting performance be confirmed there, we have the right to reclaim the associated costs from the customer.

#### **Extent of guarantee**

Work under the guarantee neither extends nor renews the guarantee period, neither for the gun nor the parts replaced. The guarantee period for the parts replaced ends with the guarantee period for the whole gun.

#### **The guarantee does not apply to:**

Normal wear and tear, damage due to no observance of the user manual or safety regulations, improper use or treatment and if the gun shows signs of mechanical damage. Damage due to acts of God or environmental influences.

Repairs, work on or modifications to the gun by unauthorised workshops or other people. Use of reloaded or not CIP approved ammunition. The guarantee does not apply to sights and telescopic sight mountings from manufacturers other than VOERE. Further or other claims, in particular those for compensation for damage apart from the gun (consequential damage) are – insofar as liability is not rigorously legally specified – excluded.